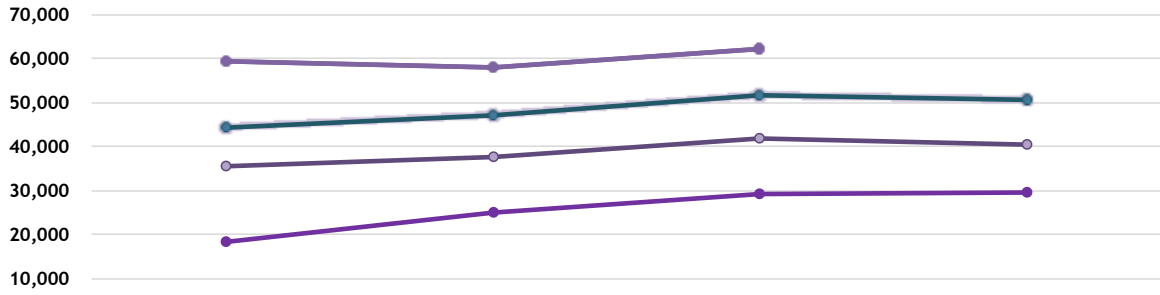
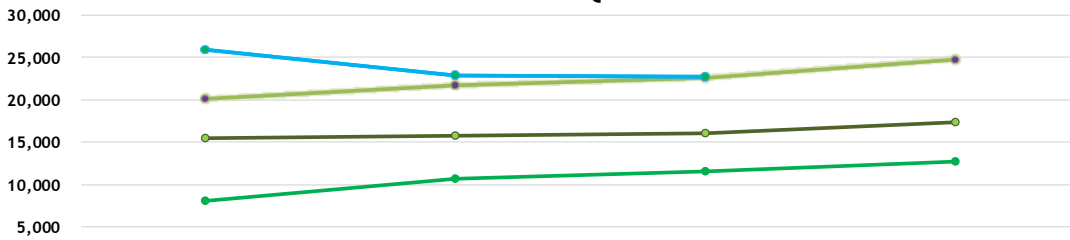


BUSTANG SYSTEM RIDERSHIP QUARTERLY COMPARISON



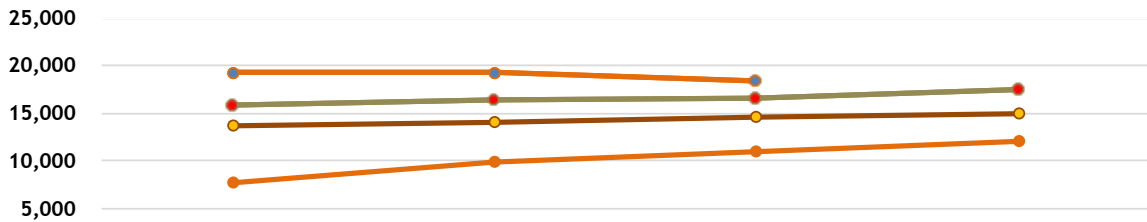
	Q1 Jul-Sep	Q2 Oct-Dec	Q3 Jan-Mar	Q4 Apr-Jun
FY15/16	18,497	25,035	29,289	29,682
FY16/17	35,683	37,697	41,967	40,517
2017-18	44,531	47,275	51,595	50,663
2018-19	59,498	57,973	62,328	

NORTH ROUTE RIDERSHIP QUARTERLY COMPARISON



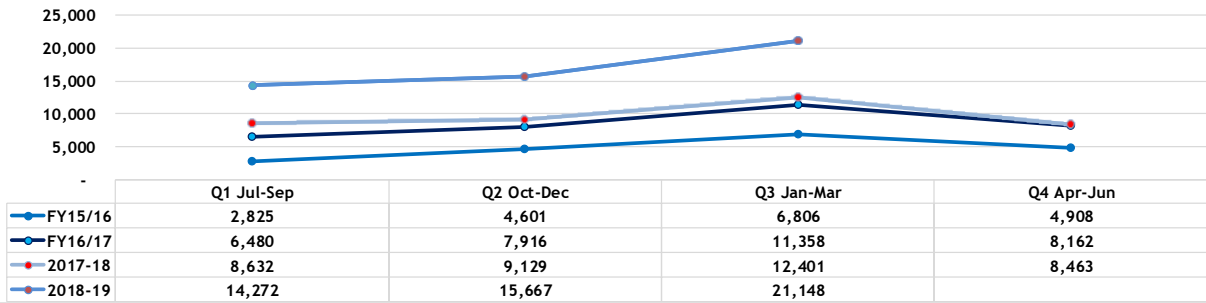
	Q1 Jul-Sep	Q2 Oct-Dec	Q3 Jan-Mar	Q4 Apr-Jun
FY15/16	8,036	10,612	11,549	12,762
FY16/17	15,512	15,764	16,073	17,293
2017-18	20,057	21,768	22,548	24,691
2018-19	25,929	22,923	22,723	

SOUTH ROUTE RIDERSHIP QUARTERLY COMPARISON

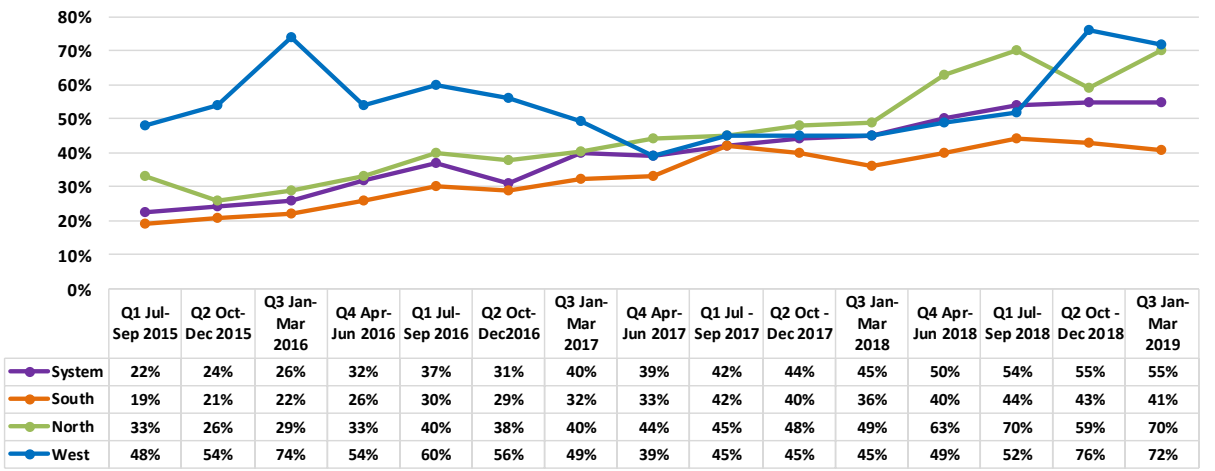


	Q1 Jul-Sep	Q2 Oct-Dec	Q3 Jan-Mar	Q4 Apr-Jun
FY15/16	7,636	9,822	10,934	12,012
FY16/17	13,691	14,017	14,536	15,062
2017-18	15,842	16,378	16,646	17,509
2018-19	19,297	19,383	18,457	

WEST ROUTE RIDERSHIP QUARTERLY COMPARISON



LOAD FACTOR BY ROUTE



FAREBOX RECOVERY RATIO

